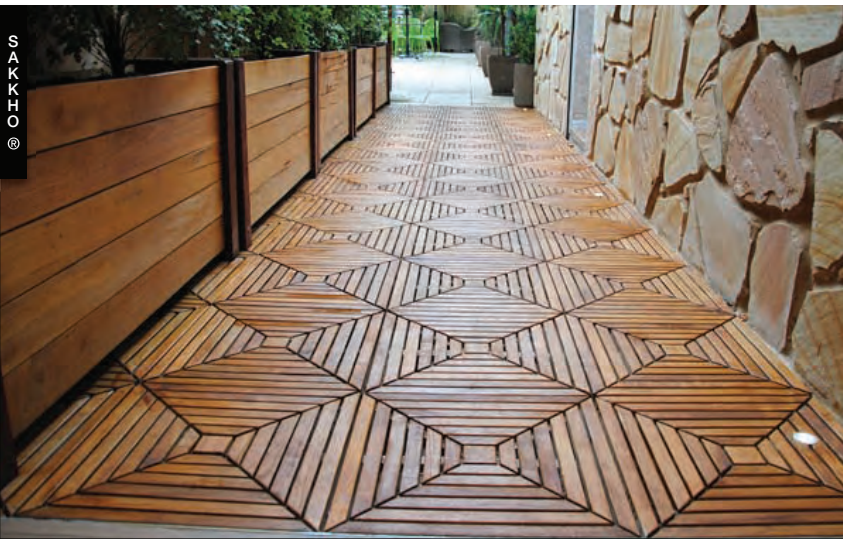




**Sakkho** Teak Tiles





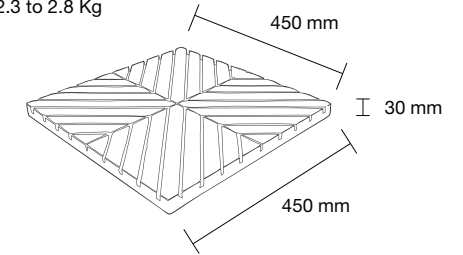
## It ends with Your imagination™

Available in different models  
Sakkho tiles are versatile in their application



Natural untreated wood

Weight:  
2.3 to 2.8 Kg



Surface per tile: 0.2025 m<sup>2</sup>

### Sakkho® Tiles Features

- Versatile building material
- Selected good quality teak wood
- Class 1 wood durability high lifespan
- Timber resistant to extreme weather
- Interior and exterior applications
- Permanent or temporary installation
- Commercial or residential projects
- Apply timber finishes, paints, coatings
- Can be restored and reclaimed
- Possible acoustic application

### Endless Possibilities

- Interior and exterior wall panels
- Partition and featured walls
- Interior or exterior shower wall
- Wood facades and columns
- Furniture design, seating area
- Residential decking, front porch
- Commercial decking for light use
- Bathroom, shower deck and wall
- Suspended or stud ceilings
- Wine cellar and bar ideas



#### SAKKHO

P.O. BOX 454, BENTLEIGH EAST VIC 3165 AUSTRALIA

Office: +61 3 9021 6879

info@sakkho.com - www.sakkho.com

Subject to Terms &  
Conditions, available from  
Sakkho. Copyright© Sakkho

