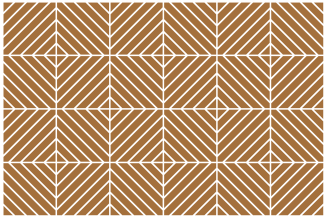


Ah

Standard • Qty 20Ft: 6,636 units
STK-AH45 • Qty 40Ft: 8,120 units

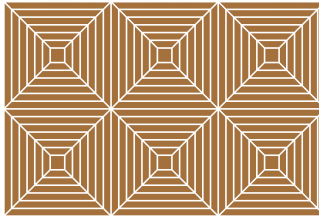
Reinforced • Qty 20Ft: 5,652 units
STK-AH45F • Qty 40Ft: 6,916 units



So

Standard • Qty 20Ft: 6,636 units
STK-SO45 • Qty 40Ft: 8,120 units

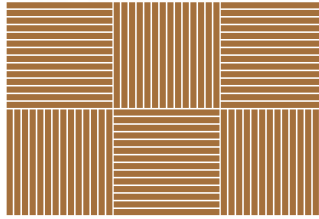
Reinforced • Qty 20Ft: 5,868 units
STK-SO45F • Qty 40Ft: 7,184 units



Linia

Standard • Qty 20Ft: 6,104 units
STK-LN45 • Qty 40Ft: 7,472 units

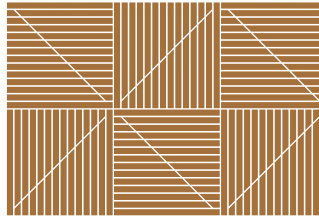
Reinforced • Qty 20Ft: 6,104 units
STK-LN45F • Qty 40Ft: 6,916 units



Linia - split

Standard • Qty 20Ft: 6,104 units
STK-LNS45 • Qty 40Ft: 7,472 units

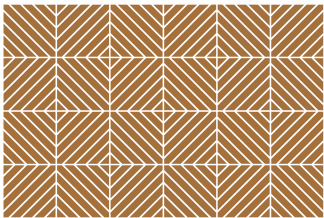
Reinforced • Qty 20Ft: 6,104 units
STK-LNS45F • Qty 40Ft: 6,916 units



Arro

Standard • Qty 20Ft: 6,636 units
STK-AR45 • Qty 40Ft: 8,120 units

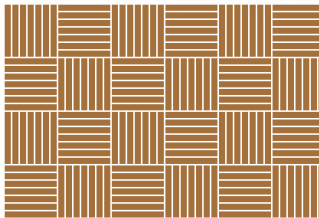
Reinforced • Qty 20Ft: 5,652 units
STK-AR45F • Qty 40Ft: 6,916 units



Mix

Standard • Qty 20Ft: 6,104 units
STK-MX45 • Qty 40Ft: 7,472 units

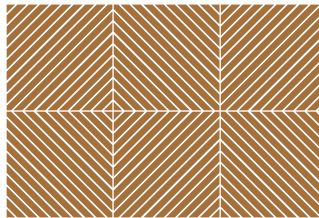
Reinforced • Qty 20Ft: 5,652 units
STK-MX45F • Qty 40Ft: 6,916 units



Blik

Standard • Qty 20Ft: 6,104 units
STK-BK45 • Qty 40Ft: 7,472 units

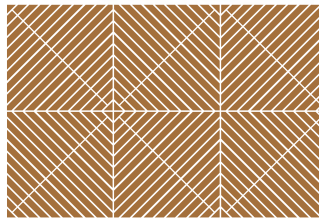
Reinforced • Qty 20Ft: 5,652 units
STK-BK45F • Qty 40Ft: 6,916 units



Blik - split

Standard • Qty 20Ft: 6,104 units
STK-BKS45 • Qty 40Ft: 7,472 units

Reinforced • Qty 20Ft: 5,652 units
STK-BKS45F • Qty 40Ft: 6,916 units



Sakkho® Tiles



Tile Weight: 2.3 to 2.8 Kg

Dimensions: 450 x 450 x 30 mm



Sakkho Sales Rep.
mob: +61 422 267 880
www.sakkho.com



SK-TL-EN

Sakkho - www.sakkho.com
P.O.Box 454, Bentleigh East, VIC 3165, Australia
Mob: +61 422 267 880 - info@sakkho.com



Errors or omissions are unintentional. Model specifications may vary without prior notice. Sakkho rejects all responsibility related to the choice of tile or base type. Tile models and timber species subject to availability at time of order. Subject to Terms & Conditions, available from Sakkho. Copyright© Sakkho



Sakkho®
JUST IMAGINE